



The State Ballet
of Rhode Island

SBRI

Artistic Director *Herci Marsden*



64th
Performing
Season
1960-2024



Congratulations to
**Artistic Director
Herci Marsden**

&

**The State Ballet
of Rhode Island**

for 64 Years of
Artistic Excellence.

Brava!



HAPROXY

Making Websites Faster and
More Secure Since 2001

WWW.HAPROXY.COM



A MESSAGE FROM THE ARTISTIC DIRECTOR

As the 64th season opens for The State Ballet of Rhode Island, I would again like to express my thanks for the support that we have received from you, the people of Rhode Island and beyond. I feel privileged to have watched how many generations of dancers have given of themselves performing for SBRI. For a small state, Rhode Island is truly fortunate to have an abundance of art and culture that makes life itself meaningful.

It amazes me how fast the years have passed, for which I am deeply grateful. I would like to thank all of those who have supported The State Ballet during these years with their interests, talents, and attendance to performances.

"In 1960, The State Ballet of Rhode Island was only a dream. Today, it is a reality."

With Love and Gratitude,

Herci Marsden
Herci Marsden

THE STATE BALLET OF RHODE ISLAND'S MISSION:

The State Ballet of Rhode Island is the state's first established classical ballet company in residence. Its mission is to create, present, preserve and extend the great repertoire of classical dancing to the widest possible audience, while providing exciting performances and educational programming of the highest quality.

PROJECT BALLET IN EDUCATION

The State Ballet of Rhode Island is RI's first ballet company to offer an enrichment program to students, seniors, private and public schools, and general audiences called "Project Ballet In Education". The company offers the best in full-length story ballets and fairy tale classics to the contemporary by guest choreographers and its Artistic Director, Herci Marsden. Lecture-demonstrations and performances are designed for school and community settings. Since its inception in 1960, SBRI has held the belief that the youth of our state needs the arts experience which will enable them to develop not only academically but with an awareness and hopefully appreciation for the arts.

A MESSAGE FROM THE EXECUTIVE DIRECTOR

I am pleased to open our 64th Performing Season with our ballet *Coppélia*, which premiered in Rhode Island by SBRI in 1962. Thanksgiving weekend is a wonderful time to celebrate while seeing friends, seeing family, and seeing ballet. And for spring, something enchanting awaits: we are all excited to bring back *A Midsummer Night's Dream*, which SBRI premiered in 2015.

Over the years and continuing in the present, SBRI brings together a unique combination of four art forms: music, dance, drama, and the art of stage craft including costumes, sets, lighting, and more. I am grateful for all of our volunteers who work solely for the love of these art forms and are the true source of strength that makes SBRI possible. And for the past 15 years, our collaborating event with the Gloria Gemma Breast Cancer Resource Foundation brings together all people in Rhode Island and surrounding areas. To give of yourself is the purest form of generosity.

On a personal note, as a Marsden, this quote has become true to me, "If we have brought to others an understanding and love for the art of dance, then all has been worthwhile. Then my dream has truly been realized."

Thank you for believing in your State Ballet,

Ana Marsden Fox
Ana Marsden Fox



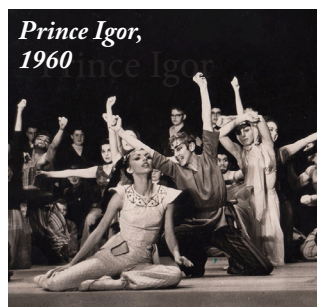
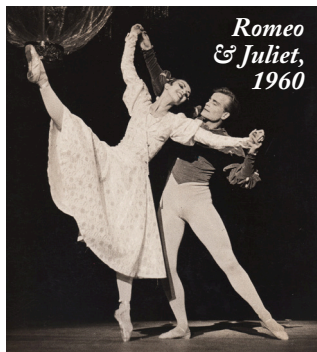
WHAT IS A CIVIC, REGIONAL BALLET COMPANY?

SBRI was founded as a non-profit membership organization on Oct. 13, 1960, through the efforts of Herci & Myles Marsden and a group of 60 Rhode Islanders. For over a half-century, SBRI has earned a prestigious reputation and is recognized as an outstanding cultural asset to RI. This is part of the responsibility of a civic, regional ballet company; to provide its community with high-quality dance performances while educating audiences and training dancers and artists. A pre-professional ballet company must reach communities and populations that may not be served by professional companies. SBRI audiences gain knowledge and an appreciation of classical ballet, music, and art. Read SBRI's history pages to learn about collaborations and achievements gained regionally, nationally, and internationally.

The State Ballet of Rhode Island has provided a showcase for the area's serious dancer. Many use the valuable training and experience they gain to pursue professional careers in dance and theater. For students who choose not to dance their vocation, SBRI provides the opportunity to fulfill their artistic ambitions on a semi-professional level. SBRI offers a variety of meaningful experiences, the discipline of training, the thrill of performing, and the satisfaction of achieving personal goals.

THE STATE BALLET OF RHODE ISLAND'S HISTORIC "POINTES"

The State Ballet of Rhode Island (SBRI) was founded in 1960 through the efforts of Herci and Myles Marsden and a group of sixty enthusiastic Rhode Islanders. It has come to serve as a creative outlet for composers, musicians, writers, painters, lighting technicians, costume designers, and choreographers, as well as dancers.

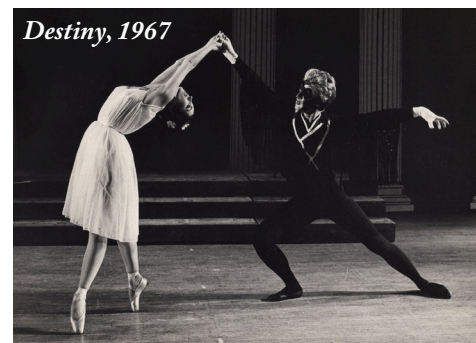


1960's—

- November 19, 1960 - SBRI has its premiere performance in Rhode Island at Veterans Memorial Auditorium.
- *Coppélia* has its premiere in Rhode Island in 1962 before an enthusiastic crowd.
- SBRI represents RI several times at the New York World's Fair and Eastern States Expositions.
- In the interest of cultural exchange, SBRI receives a grant from the National Endowment for the Arts and Humanities to invite Croatian choreographer/dancer Oskar Harnos to assist SBRI in staging the first American production of *Stranger* (1968).
- Isobel Harris Sheppard composes *Ballet from Another Planet* for SBRI. First performance is on the ocean rocks in Turnberry, Narragansett (August 1965).
- George Hirst, a Rhode Island composer, writes *Marche* for Herci Marsden, SBRI.
- SBRI dances at the State House's annual observances of Lincoln's Birthday in the 1960's.
- At the annual University of Rhode Island Arts Festival, SBRI performs *Destiny* on April 27, 1965 in Kingston, RI.
- For the first time in Rhode Island, SBRI performs *Giselle* to an overflowing audience at Veterans Memorial Auditorium (1964). World-famous Anton Dolin is guest choreographer and also plays Hilarion in the production.
- Capacity audiences see SBRI perform at the Diamond Hill Music Festivals, beginning in 1965.
- SBRI performs *Destiny* at the first Performing Arts Festival with the Rhode Island Philharmonic Orchestra in 1967.
- SBRI performances are featured at many civic events, including the State House Rotunda and at the 325th Anniversary of the City of Providence at Brown Stadium.
- In 1969, SBRI participates in the filming of a television show for Channel 36 at Rhode Island College.

1970's—

- Over the decade, SBRI introduces to Rhode Islanders such giants in its traditional repertoire, such as *Giselle*, *Coppélia*, *Romeo and Juliet*, *Cinderella*, and *The Sleeping Beauty*. Guest choreographers Anton Dolin, Oskar Harnos, Joseph Levinhoff, and Mia Slavenska interpret their work, supervise rehearsals, and lend their presence on the stage. Harnos performs the role of the Stranger in his ballet *Stranac*, and Dolin appears as King Claudius in *Hamlet* and Hilarion in *Giselle*.
- SBRI performs *Faust*, *Aida*, *Merry Widow*, *La Traviata*, and *Carmen* with Providence's Opera Theatre and performs with the Rhode Island Civic Chorale and Orchestra in the production of *Carmina Burana*.
- The Company of 57 packs its costumes, scenery, and equipment and travels to Croatia, by invitation from the Croatian government (1970).
- Guest choreographer and Artistic Advisor for The State Ballet, Sir Anton Dolin, and John Gilpin, London Festival Ballet, choreograph the famous *Pas de Quatre* for SBRI. It premiered in 1976.

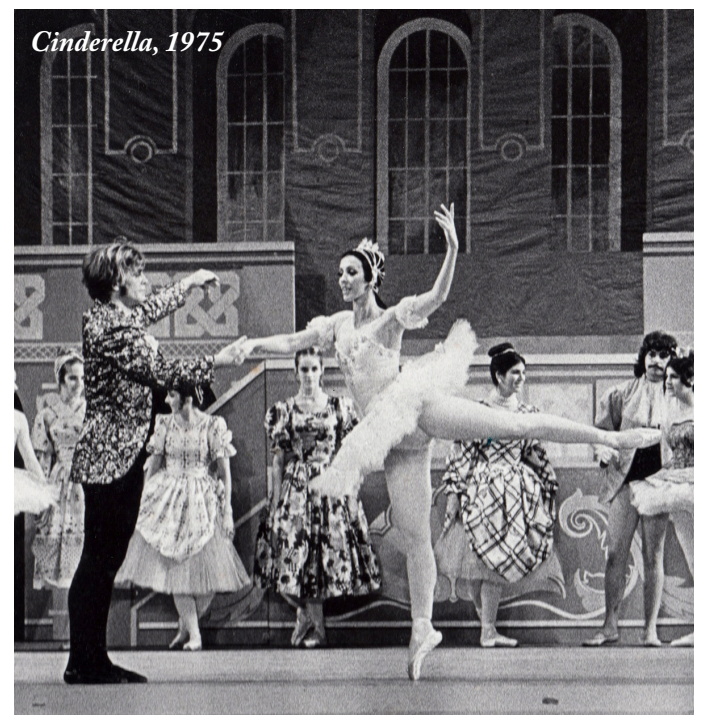
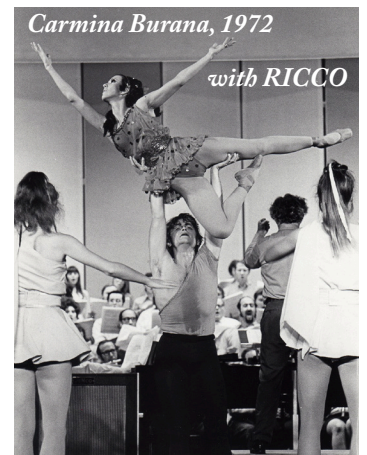


1980's—

- The full-length story ballet *Sylvia - The Nymph of Diana* is performed for the first time in the United States, choreographed by SBRI's Artistic Director, Herci Marsden.
- In front of sold-out crowds, SBRI performs several short works at Bryant College's 125th Anniversary Celebration.
- As guests of RI School of Design in 1989, SBRI performs at the RISD Museum's, *An Informal History of Dance in Rhode Island*, presenting several short ballet works with commendable performances.

1990's—

- SBRI is commissioned by the South County Center for the Arts to perform the full length story ballet *Coppélia* at South Kingstown High School in February 1990. The performance is a sold-out crowd pleaser. The company is asked to return the following year for another successful performance.
- Margaret Buechner, a composer from Michigan, commissions Herci Marsden to choreograph the World Premiere Fairy Tale Ballet *Phantomgreen*, based on the Hans Christian Andersen story *The Princess and the Pea*. Ms. Buechner writes this original story, music, and libretto. A compact disc of *Phantomgreen* is currently available in the United States and Europe. Two of SBRI's principal dancers appear on the cover of the compact disc. An insert that accompanies the disc states that choreographer, Herci Marsden, premiered *Phantomgreen* and it is performed by SBRI.
- In November 1991, the Student Activities Office of the University of Rhode Island invites SBRI and Artistic Director, Herci Marsden, to perform the full length classic *Giselle*. The event was sold out.
- On July 27, 1995, SBRI appointed Artistic Associate and member of the New York City Ballet, Richard Anton Marsden, to return to his hometown theater Veteran's Memorial Auditorium in Providence, RI, where he received standing ovations for his performance. This event, sponsored in part by SBRI, was a celebration of pride, support, and a Marsden Family success story.
- On August 3, 1995, Ms. Marsden, along with other SBRI members appears on ABC's *Good Morning America*.
- On May 10, 1996, SBRI members perform the RI premiere of *Two's Company*, a ballet directed and choreographed by Toni Pimble, Artistic Director of the Eugene Ballet Company, Oregon.
- SBRI's annually performs and visits at Hasbro Children's Hospital in Providence, RI bringing well-known fairytale characters to life. The experiences are rewarding and meaningful for the dancers, the young patients and their families.
- Citizen's Bank proudly sponsors several of SBRI's Project Ballet in Education *Cultural Enrichment Performances* children performances.
- SBRI premieres of *Ballet Ireland* and *La Esmeralda* in spring of 1999.



- SBRI performs at events such as 'The Festival of Giving,' the Town of Lincoln's 'Festival of Lights,' and The Lincoln Mall's Holiday Celebrations.
- SBRI Alumna Principal Dancer and Executive Director, Ana Marsden Fox, premieres her choreographed, eclectic ballet, "Les Pieds."
- SBRI is filmed by National Geographic for its TV series, *Jellyfish*, aired on PBS, 2001.
- 41st Season of The State Ballet opens with premiere of *Ballet Espagnol*.
- SBRI annually participates in the RI Health and Fitness Expo at the RI Convention Center, demonstrating healthy lifestyles and positive community involvement.
- SBRI performs at the annual Robert Mondavi Festival of the Vine WaterFire events, *On the Corner of Art and Vine*, at WaterPlace Park.
- In June 2003, SBRI hosts its first *Partner with the Arts*, which welcomes business & community leaders to explore opportunities with SBRI.
- SBRI performs at Trinity Repertory Company's *Holiday Open House* in December of 2003, and *Ballet West & Les Bras* premieres in May of 2004.
- RI premieres of *Cherokee*, *Boys Will Be Boys*, and *Goddesses of the Vine* in May, 2005.
- *Summertime*, a solo variation danced to music from the opera, *Porgy and Bess*, is premiered by resident choreographer and SBRI alumna, Shana Fox. The piece marked the choreographer's official launch as a SBRI resident choreographer.
- SBRI hosts its 5th annual PWTA event on the outdoor stage at SBRI's grounds, and performs with Mike Lyons and The Blue Moon Orchestra.
- *Coppélia* is honored with a Motif Magazine Theatre Award – 'Recognized for Excellence in the 2008 Motif Theatre Awards readers poll & voted - Best Dance Production.'
- In May 2008, *Gansel and Hetal* is premiered by Ana Marsden Fox, and a revival of *Claire de Lune* is created by Mia Nocera Godbout.
- The 2008-2009 season began with a revival of SBRI's Project Ballet Coffee Hour *From Studio to Stage*, a four-series, family-friendly event of how a ballet is created including music, lecture and a visual performance.
- Mark Marsden, Mia Nocera Godbout, and Shana Fox collaborate to produce an electrifying world premiere ballet, *Gracefully Gershwin*, funded partially by a RISCA grant.
- *Coppélia* is named 'The Professional Semi-Pro Best Dance Production' during the 2009 Motif Theatre Awards readers' poll.



HM, *Giselle*, 1964



Dolin's *Pas de Quatre*, 1976



Dolin's *Pas de Quatre*, 1976



Giselle 1980 Backstage
Giselle and Queen Myrtha

- SBRI officially opened its 50th Season with Rhode Island's holiday tradition, *Coppélia*. For its Spring Performance, The State Ballet performed the monumental classical ballet, *Giselle* to feature appearances by numerous alumni dancers from over the Company's 50 years in existence!
- On June 6, 2010, SBRI is honored at their Golden Anniversary Gala surrounded by five decades of alumni, patrons, and guests.
- In October of 2010, SBRI performed the opening ceremonies, by invitation, for the Gloria Gemma Breast Cancer Research Foundation's *Flames of Hope* event in front of a Providence, RI crowd of thousands. Two new pieces, 'My Heart Will Go On' and 'Lift Me Up' make their emotional debut. For the last ten years, with Shana Fox as choreographer, this annual community event continues with several premiers.
- The spring 2011 performances of Artists in Motion features the premiere of *Petra and the Vuk*, choreographed by Ana Marsden Fox. A Croatian twist on the traditional story of *Peter and the Wolf* delights audiences of all ages and ethnic backgrounds.
- Herci Marsden's 1982 premiere of *Impressions of the Sky* is resurrected & restaged by Marsden's granddaughter and SBRI Resident Choreographer, Shana Fox Marceau. Incorporating the majority of the original theme, steps, and Goldsmith musical score, Fox refreshes the piece with added music of Frank Zappa and twists of *Mother Nature's Imagination*.
- Herci Marsden's staging of *Pictures at an Exhibition* as the 3rd act of Artists in Motion 2011 sparks a trilogy of art forms that incorporate nearly 200 RI artists. The Company's performance is fused with its first *Artist Exchange* where over 110 visual artists interpret the music, storyline and movement creating a gallery full of 2-dimensional artwork. RI Composer and musician, George Leonard, is highlighted as a guest artist when he portrays the acting role of Musorgsky during the performances.
- SBRI Principal Dancer, Holly Fusco, is voted RI's 2011 'Leading Female Dancer of the Year' by Motif Magazine.
- Throughout SBRI's 52nd Season, the company teamed up with New England children's author, David Ira Rottenberg, for multiple performances of *Gwendolyn the Graceful Pig*, a narrated ballet that fuses reading and ballet. SBRI's performances are choreographed by its resident choreographer, Mia Godbout, also a full-time children's reading specialist.
- In spring of 2012, Motif Magazine awards SBRI's *Coppélia* as 2012 Holiday Dance Production of the Year.
- In May 2012, the one-act ballet *Safari* takes the stage, marking a world premiere of music and dance – a collaboration between SBRI's choreographer Mia Godbout and Rhode Island Modern Music Project's composer Christy Isles.
- SBRI welcomes alumni dancer Corey Bourbonniere back to Rhode Island for his Hometown Debut performance as a professional ballet dancer with Pittsburgh Ballet Theatre. Corey performs with SBRI in Herci Marsden's, *Giselle*, in March 2013, and is currently a Pittsburgh Ballet Theatre soloist 2019.
- In April of 2013, SBRI was voted 'Reader's Pick – Best Dance Company' by The Providence Phoenix Magazine.
- In May 2013, SBRI Resident Choreographer, Shana Fox, collaborates with RI composer, Noreen Inglesi, to create the world premiere ballet, *Dance of the Firefly* which debuted on the Company's outdoor stage during the annual *Wine Tasting Soiree* in front of a sold out crowd. It was voted Dance Production of the Year by Motif Magazine.



Coppelia Act II, late 1970's

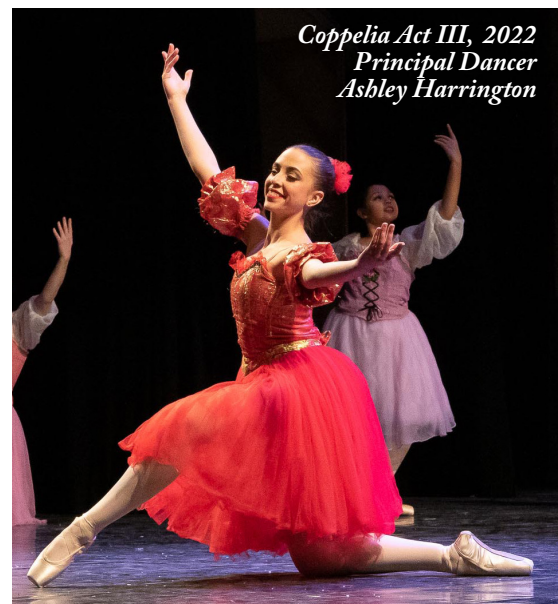
- SBRI's Principal Dancer, Mark Marsden, is voted RI's 2013 'Principal Dancer of the Year' by Motif Magazine. Also nominated was his partner, Principal Dancer Peg Chobanian.
- In March 2014, choreographer Mark Marsden premieres his ballet *Train*. In collaboration with the music of RI's composer Noreen Inglesi. Ana Marsden premieres *Hegnar & Buck*.
- SBRI celebrates its Emerald Season in 2014-2015 and premiered the large-scale, full length production *A Midsummer Night's Dream*, and won Motif Magazine's 'Production of the Year' Award.
- On June 12th, 2015 SBRI collaborates with Paul M. Coté and The Vernal Arts and Music Festival to produce *Lest We Forget* to benefit the Alzheimer's Association. Mr. Coté and SBRI continue community collaborations to support the Alzheimer's Association.
- With the Gloria Gemma Breast Cancer Resource Foundation, SBRI performs at the RI Flower & Garden Show Preview Party as living statues from the ballet *Giselle*.
- In the summer of 2016, SBRI's Principal Dancer, Kimberly Najjar, is voted 'Principal Dancer of the Year' and Herci Marsden's *Giselle* is voted 'Production of the Year'.
- SBRI opens its 57th Season with a celebratory transition to the historic Park Theatre in Cranston, RI.
- SBRI performs Herci Marsden's *Phantomgreen* for their Spring Ballet, in addition to *Ballet of the Clowns*, *Esmeralda*, *Claire de Lune*, and new ballets *Company of Three* and *Deco*.
- SBRI and Paul M. Coté collaborate for the 2017 *Food and Wine Tasting Soirée*.
- In March 2018, SBRI performs *Alice's Adventures in Wonderland*, a Rhode Island premier, composed by Joseph Horovitz.
- In March 2019, SBRI premieres *A Tale of Twelve Dancing Princesses*, and *The Colors of Love and Light*, which won Motif Magazine's 2019 Performance of the Year, for choreographers Lori Broess and Shana Fox, with artist Paul M. Coté, a stage collaboration.
- SBRI joins the Providence Singers and the Rhode Island Philharmonic in a performance of Whitbourn's *Luminosity*.

2020's—

- SBRI & Herci Marden's Signature Ballet *Giselle* celebrates the 60th Anniversary Season, set for April 3 & 4, 2020.
- Sunday Nov. 22, 2020, a "Take It Outside" premiere community performance on SBRI's Secret Garden & Community Stage Venue with The Exiles/Blackstone River Theatre, and Cabaret Artist Ida Zecco with Jim Rice/The Arctic Playhouse, and SBRI's Act 3 *Coppelia* Ballet Divertissement.
- Spring Expressions 2021 with Classic Tales & New Works: *The Final Game*, *Rechauffe Brillante*, *A Midsummer's Fairytale*, and *The Sleeping Beauty Act 3 A Royal Wedding in the Woods*.
- In Nov. 2021, SBRI performs at the town of Lincoln's 150th Celebratory Year.
- In November 2021, SBRI performs in support of the MAE Foundation For the Homeless, followed by Herci Marsden's *Coppelia* making its premiere at the McVinney Auditorium in Providence on Nov. 27th.
- In April, by invitation, SBRI collaborates with Providence Singers.
- In May, SBRI hosts Spring Expressions 2022, featuring two new ballets, *New Day's Lyric* and *Western Hyberole*, and beloved repertoire pieces *Dance of the Hours*, *Thais Meditation*, and *Tarantella*.
- SBRI returns to the State House in Providence for the 15th season in support of the Gloria Gemma Foundation's *Flames of Hope: Illuminations of Life* celebration.
- In Nov. 2022 and April 2023, *Coppelia* and *Alice's Adventures in Wonderland* were received with an abundance of enthusiastic audiences. With our 18th Partner With the Arts Awards in May we were happy to honor three recipients: Katie Vincelette, Alicia Grasfeder, and Robin Turner, along with the premiere of *Spring Blossoms*.



Coppelia Act III, 2022
Rebecca DeVivo &
Josh Ibake



Coppelia Act III, 2022
Principal Dancer
Ashley Harrington



Coppelia Act III, 2022
Harvest, Corps de Ballet

WELCOME TO BRAE CREST

Official School of The State Ballet of Rhode Island
est. 1958



BALLET TECHNIQUE - POINTE - CHARACTER
PAS DE DEUX - VARIATIONS - MODERN
FOR
PRE-PRIMARY, BEGINNERS, INTERMEDIATE,
ADVANCED, AND PROFESSIONAL LEVEL

Brae Crest Faculty & Staff

HERCI MARSDEN
Founding Prima Ballerina,
SBRI Artistic Director,
& Choreographer

ANA MARSDEN FOX
SBRI Alumna, Executive Director,
Choreographer & Classical
Ballet Specialist

SHANA FOX MARCEAU
SBRI Alumna, Assistant Director,
Specialist Choreographer

MARK MARSDEN
RICHARD A. MARSDEN
DUJKO RADOVNIKOVIC
ASHLEY MARSDEN
ASHLEY HARRINGTON
LORI BROESS



52 Sherman Ave Lincoln, RI, 02865
10 minutes north of Providence
Route 146 N, Exit 6, Sherman Ave.

Tel. (401) 334-2560

www.stateballet.com | info@stateballet.com



HERCI MARSDEN

PRIMA BALLERINA, ARTISTIC DIRECTOR

Born in Omis, near Split, Croatia, Herci Munitic began dancing at age five with the Children's Theater of Split. She made her debut at age thirteen with the National Theater in Split. Throughout her years of training, she has such notable mentors as Mila Katic, Ana Roje, Oskar Harmoš, and Mia Slavenska.

In 1958, Ms. Marsden immigrated to the United States to live in Lincoln, Rhode Island where she co-founded the Brae Crest School of Ballet. As Prima Ballerina, Herci Marsden made her American debut in 1960 with The State Ballet of Rhode Island - the repertory company she was instrumental in establishing.

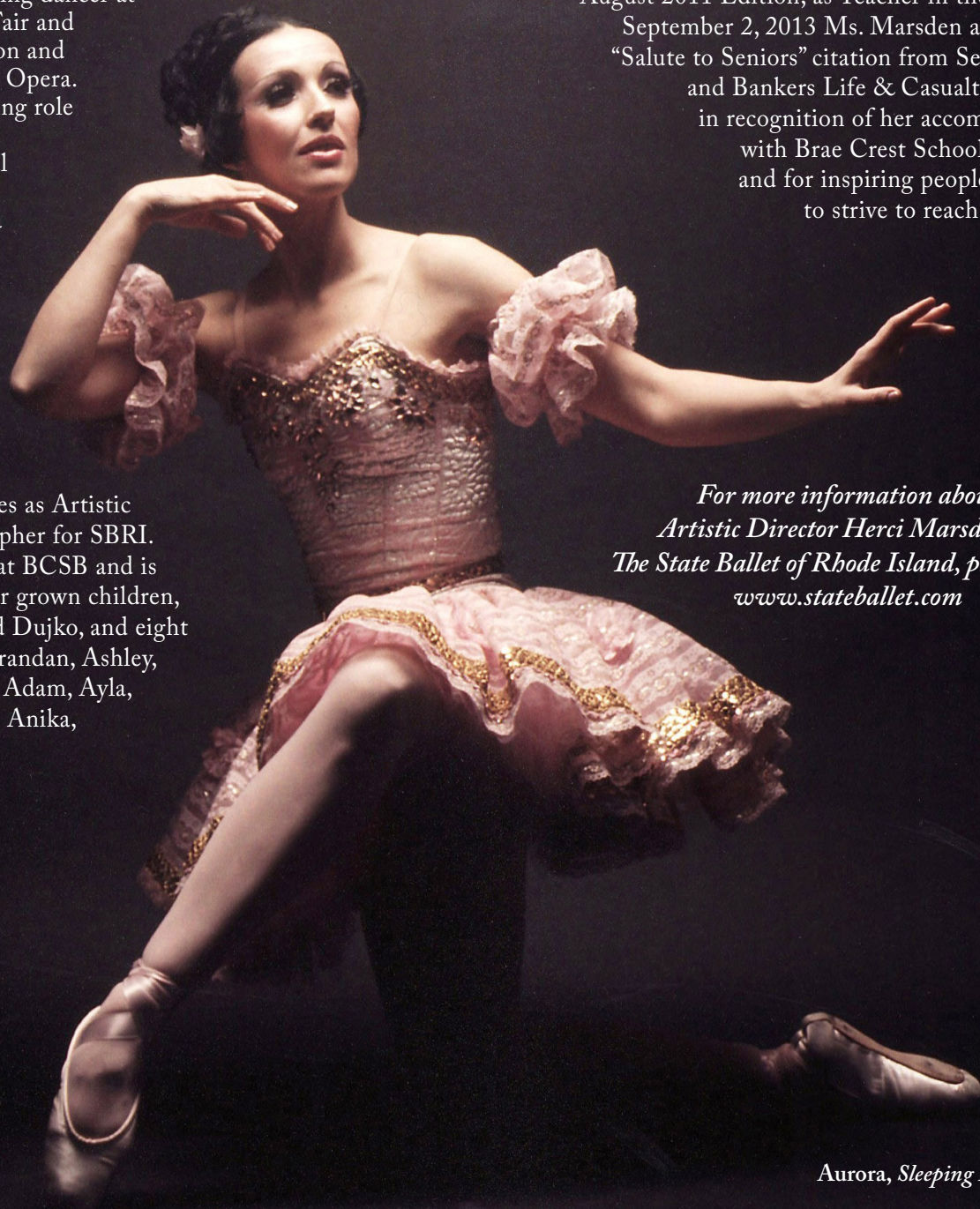
While balancing her active careers with The Brae Crest School and The State Ballet, Ms. Marsden was a leading dancer at the New York World's Fair and Eastern States Exposition and the St. Louis Municipal Opera. She performed the leading role in *Destiny* at the First Performing Arts Festival with the Rhode Island Philharmonic Orchestra in 1967.

Ms. Marsden continues as Artistic Director and Choreographer for SBRI. She continues teaching at BCSB and is the proud mother of four grown children, Ana, Richard, Mark, and Dujko, and eight grandchildren, Shana, Brandan, Ashley, Ayden, Adela, Armin & Adam, Ayla, and great-grandchildren Anika, Hudson, and Henry.

She also danced in *Faust*, *Aida*, and *Carmen* with the Providence Opera Theater, and danced with the Rhode Island Civic Chorus and Orchestra in the production of *Carmina Burana*. By invitation of the Yugoslavian government, the Marsdens led the 57 members of The State Ballet of Rhode Island to tour Croatia in 1970.

Ms. Marsden has been an integral part of SBRI since its inception, not only as Prima Ballerina but also notably as a choreographer, and since 1976, as Artistic Director. Edwin Safford, the long-time critic for The Providence Journal, described her versatility: "As choreographer, and Artistic Director, too, she displayed an undeniable authority over the company."

In Rhode Island; also in 2010, Capezio® awarded her Brae Crest School with the prestige and \$5000 in scholarship money as the first recipient of Capezio's Studio Connect Award - Scholarship Division. Brae Crest was the only school chosen, nationwide, for their generosity and excellence in ballet training for its community; Ms. Marsden was highlighted in Dance Studio Life Magazine, August 2011 Edition, as Teacher in the Spotlight; September 2, 2013 Ms. Marsden accepted her "Salute to Seniors" citation from Senior Digest and Bankers Life & Casualty Company in recognition of her accomplishments with Brae Crest School and SBRI, and for inspiring people of all ages to strive to reach their goals.



*For more information about
Artistic Director Herci Marsden &
The State Ballet of Rhode Island, please visit
www.stateballet.com*

FAMILY, MENTORS & FRIENDS

HERCI MARSDEN

PRIMA BALLERINA,
ARTISTIC DIRECTOR

ANA MARSDEN FOX

SBRI ALUMNA, EXECUTIVE DIRECTOR,
RESIDENT CHOREOGRAPHER

SHANA FOX MARCEAU

SBRI ALUMNA, VICE CHAIRPERSON,
RESIDENT CHOREOGRAPHER

MARK MARSDEN

SBRI ALUMNUS
& PRINCIPAL ARTIST

RICHARD MARSDEN

SBRI ALUMNUS
& PRINCIPAL GUEST ARTIST

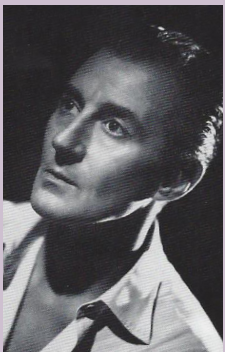
DUJKO RADOVNIKOVIC

SBRI ALUMNUS & COMPANY
TECHNOLOGY CONSULTANT

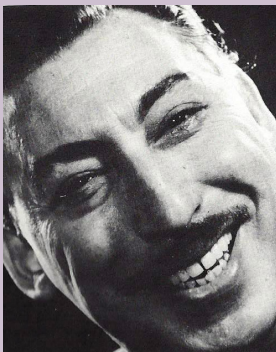


Founding Prima Ballerina Herci Marsden during rehearsal, March 2020

SIR ANTON DOLIN



OSKAR HARMOS



JOSEPH LEVINOFF



JOHN RADOVNIK



MADAME ANA ROJE



MIA SLAVENSKA



SBRI CHOREOGRAPHERS & REHEARSAL ASSISTANTS

SHANA FOX MARCEAU



Shana, a Lincoln native, has grown up at Brae Crest. She joined SBRI in 1990 progressing throughout the company ranks. Shana received her BA in Communication from the University of New Hampshire (2001) where she danced and choreographed for the UNH Dance Company. From 2010 to the present, Shana has created and collaborated on multiple ballets, including *Summertime*, *Lift Me Up* (2010), and *Deco* (2017), and premiered *Gracefully Gershwin* (2009), *A Midsummer Night's Dream* (2015), *The Colors of Love & Light* (2019), and *Alice's Adventures in Wonderland* (2018, 2023). In 2011, Shana restaged a 1981 SBRI repertoire ballet, *Impressions of the Sky*, which was originally created by her grandmother, Herci Marsden. In the same year, she was a project coordinator for the Company's Artist Exchange which brought together nearly 200 artists of dance, music and visual arts as part of Herci Marsden's *Pictures at an Exhibition*. Her world premiere ballet, *Dance of the Firefly*, with RI composer Noreen Inglesi was voted Motif Magazine's 'Best Dance Production

of 2013.' Her collaboration with Artist Paul Cote and Lori Broess on *The Colors of Love & Light* won the same accolades in 2019.

Shana is honored being choreographer for the Gloria Gemma Breast Cancer Resource Foundation's annual 'Illuminations of Life' ceremony during *Flames of Hope*, creating over 65 new works since 2010. She is a 2017 recipient of the Gloria Gemma *Our Heroes Volunteer* award for her dedication. Continuing community outreach, as SBRI's resident choreographer, Shana enjoys working with the MAE Foundation for the Homeless and mentoring high school seniors.

In addition to being a resident ballet instructor at BCSB, she is an SBRI rehearsal assistant and a Vice Chairperson of SBRI Board of Directors. Shana, a gracious recipient of a 2008 SBRI Partner With the Arts Award, passionately continues her family legacy of loving and living classical ballet. She and her husband reside in Lincoln with their daughter Anika.

LORI LEVIN-BROESS



Lori started as a student at the Brae Crest School of Ballet in 1966 and became an apprentice to the company in 1972 and a company member in 1972. She has danced in numerous SBRI ballets such as *Romeo and Juliet*, *Coppélia*, *Giselle*, *Ballet of the Clowns*, and *Gaite Parisienne* to name a few. She has choreographed several pieces for SBRI fundraisers and its Partner with the Arts Soirée. Lori also premiered *Company of Three* (2017) and collaborated in choreographing for SBRI premiers *A Midsummer Night's Dream* (2015), *Alice's Adventures in Wonderland* (2018), *The Colors of Love & Light* (2019), and *Luminosity* (2019). She

is vice president of SBRI Board of Directors as well as a rehearsal assistant and resident photographer. She is a recipient of SBRI's Partner with the Arts Award for her long-time dedication to the company, and she can be found hosting the children's tea party before matinée performances. In June, Lori premiered her ballet *The Final Game* in SBRI's Spring Expressions. 2021 Lori is a faculty member at Brae Crest School and Assistant Director of Brae Crest children's summer ballet camp. She resides in Lincoln with her husband Maarten, is the proud mother to Jennifer and Erik, and grandmother to Gabrielle.

Kimberly Najjar



Kim, "Kimmie," Najjar began dancing at Brae Crest School of Ballet in 1998. After entering The State Ballet of Rhode Island as an Apprentice in 2003, she worked her way up the ranks of the company to become a Principal Dancer. As a Principal, she danced leading roles in *Dance of the Firefly*, *Coppélia*, *Giselle*, as well as the role of Zulma (*Giselle*), and Hermia in SBRI's premiere of *A Midsummer Night's Dream* (2015). In 2016, she was honored to be awarded Motif Magazine's Principal Dancer of the Year, as well as a recipient of SBRI's Partner with the Arts award.

Now an SBRI alumna, Kim has a love for helping the next

generation of passionate dancers. She enjoys being a part of the SBRI community as a Board member, and as a rehearsal assistant – often coaching the Principal and Soloist dancers in their roles. The arts have always been a huge part of her life from studying ballet to working as a backstage Technical Assistant as a student at Rhode Island College. Earning her degree in Anthropology (2015), Kim's love for the arts and humanities has translated into her professional career. She is the Development Associate at FirstWorks, a non-profit performing arts and education organization in Providence.



THE STATE BALLET OF RHODE ISLAND

FOUNDERS: THE MARSDEN FAMILY
ARTISTIC DIRECTOR/CHOREOGRAPHER: HERCI MARSDEN
ASSISTANT TO THE DIRECTOR: ANA MARSDEN FOX

MEMBERS OF THE COMPANY

PRINCIPAL DANCERS

Rebecca DeVivo
Ashley Harrington

SOLOIST DANCERS*

Charlotte Gongoleski
Samantha Irons
Taegan Moran
**Scholarship and Merit
Award Recipients*

COMPANY DANCERS

Diana Bedford
Julia Brunelle
Sophia Burns
Rachel Curti
Molly Gilchrist
Julianne Gongoleski
Isabelle Mirzaei
Sarah O'Connell
Ellie Rawcliffe
Cassidy Weigand

APPRENTICES

Cate Crane
Rose Imeson
Lila Lemoi
Ella Tran
Molly Weigand
Liza Weyer

ALUMNI & COLLABORATING ARTISTS

Lori Levin Broess	Ashley Marsden	Mary-Kate Pomert
Jaydon Geyer	Mark Marsden	Bryan Sawyer
Rachel Goroza	Akiko Nishiyama	Arthur J. Sepe Jr.
Holly Fusco	Kimberly Najjar	Josh Thake
William Kilroy	Frank O'Donnell	

PRINCIPAL GUEST ARTISTS

Christopher Adams	<i>Boston Ballet, USA</i>
Corey Bourbonniere	<i>Pittsburgh Ballet Theatre, USA</i>
John Devaney	<i>New Jersey Ballet, USA</i>
Sir Anton Dolin	<i>London Festival Ballet, England</i>
Augustus Van Heerden	<i>Harlem Ballet, USA</i>
Timur Kan	<i>Newport Contemporary Ballet, USA</i>
Alexandre Kedrov	<i>Boston Ballet, USA</i>
William Kilroy	<i>University of Southern Maine, USA</i>
Leonid Kozlov	<i>New York City Ballet, USA</i>
Valentina Kozlova	<i>New York City Ballet, USA</i>
Devon Larcher	<i>Koresh Dance, Philadelphia, USA</i>
Myles Marsden	<i>London Festival Ballet, England</i>
Richard A. Marsden	<i>New York City Ballet, USA</i>
Dennis Poole	<i>Jeffrey Ballet, USA</i>
Josh Thake	<i>Les Ballets Trockadero de Monte Carlo, USA</i>
Greg Tyndall	<i>Newport Contemporary Ballet, USA</i>
Anthony Williams	<i>Boston Ballet, USA</i>

CHOREOGRAPHERS THROUGH THE YEARS

Sir Anton Dolin	Lori Levin Broess	Kimberly Najjar
Ana Marsden Fox	Joseph Levinoff	Toni Pimble
Shana Fox Marceau	Ashley Marsden	Madame Ana Roje
Karen Gibbons Kowal	Herci Marsden	Mia Slavenska
John Gilpin	Mark Marsden	Josh Thake
Mia Nocera Godbout	Myles Marsden	Barbara Smith-White
Oskar Harnos	Richard A. Marsden	

TEACHING ASSOCIATES & REHEARSAL ASSISTANTS

Lori Levin Broess	Shana Fox Marceau	Kimberly Najjar
Ashley Harrington	Ashley Marsden	Josh Thake

AUDITIONS & SCHOLARSHIPS

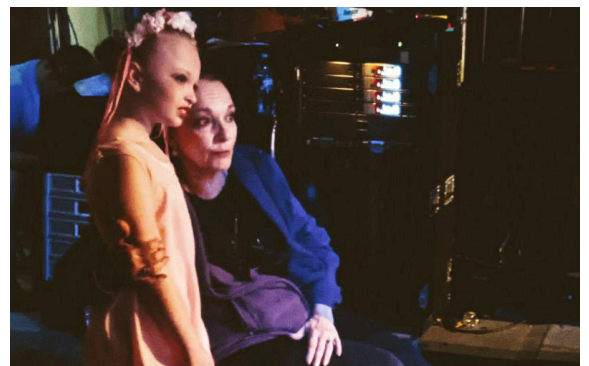
Auditions for The State Ballet of Rhode Island are held on the last Sunday in January. For further information, call (401) 334-2560, email info@stateballet.com, or visit stateballet.com

REQUIREMENTS FOR COMPANY MEMBERS:

You must have studied dance for at least six years, have danced en pointe for three years & be at least thirteen years old.

SCHOLARSHIPS

The dancers of The State Ballet of Rhode Island are a dedicated group of young people who have achieved a certain level of technique and ability. Annual Scholarships are awarded on a competitive basis. You must be an auditioning dancer or current SBRI dancer to apply. Please consider being a contributor to SBRI's scholarship fund. | www.stateballet.com



PRINCIPAL DANCERS OF THE STATE BALLET OF RHODE ISLAND

Rebecca DeVivo

North Smithfield, RI

Rebecca began ballet lessons at BCSB in 2006 and joined the SBRI company in 2015. As a company member she performed roles such as “Swanhilda’s Friend”, “Waltz Core” and “Harvest” (*Coppélia*). In 2019 she was promoted to soloist where she got to continue dancing the riveting role of being “Swanhilda’s Friend” as well as new roles such as “Prayer” and “Dawn” (*Coppélia*), “Emerald Jewel” (*Sleeping Beauty*) and the “Sun” (*Dance of the Hours*). Rebecca was promoted to Principal dancer in May of 2022 where she gets to dance the role of “Swanhilda” in *Coppélia* for the second time.

While Rebecca continues her love for ballet, she also has a passion for Theatre. She studies full time at Rhode Island College, majoring in Musical Theatre and Dance Performance. In the future, she hopes to continue to share the stage with passionate artists and become an educator in the arts whom others can learn from.



ASHLEY HARRINGTON

Providence, RI

Ashley started her ballet training at BCSB in 2003 and joined SBRI in 2007 as a pre-apprentice dancer. As a company member, Ashley performed roles such as “Harvest”, “Dawn”, and “Swanhilda’s Friend” (*Coppélia*), “Pas de Six” and “Zulma” (*Giselle*), and “Titania’s Fairy” (*A Midsummer Night’s Dream*). After being promoted to Soloist in 2016, Ashley danced the role of “Alice” in the SBRI premier of *Alice’s Adventures in Wonderland* and in 2019 Ashley was promoted to Principal. As a Principal, she has had the opportunity to perform roles such as “Myrtha” (*Giselle*), “Swanhilda” (*Coppélia*) and has been featured in pieces in Gloria Gemma’s *Flames of Hope*. This season, Ashley looks forward to her third return to the role of Swanhilda and performing in *A Midsummer Night’s Dream* once again.

Outside of the studio, Ashley works as a Program & Special Events Coordinator with the Gloria Gemma Foundation and holds a BA in Arts and Entertainment Management from Dean College. She teaches ballet at SBRI’s official school, Brae Crest School of Ballet, as well as at Oui Dance and Shooting Stars Dance Centre.



PRINCIPAL GUEST ARTISTS



WILLIAM KILROY

It is hard to believe that it was in 1981 that William first took to the stage in the SBRI production of *Coppélia*. William was honored to have performed with Herci Marsden, Ana Marsden Fox, Barbara DeVivo and so many other wonderful Swanhildas through the years.

Wil is the recipient of the Moss Heart Award, the Maine Education Association's Human and Civil Rights Award, an acting scholarship for study with Uta Hagen, USM's Advisor award, USM's Outstanding Teacher/Scholar award, and most recently the Outstanding Department Head Award from NMSU.

William holds Professor Emeritus status at the University of Southern Maine. Currently William is head of Theatre Arts at New Mexico State University, and is the managing director of the American Southwest Theatre Company in residence there. William has appeared in numerous productions, but his favorite performing role is playing Dr. Coppélius in the SBRI production of Marsden's *Coppélia*.



Photo by Zoran Jelenic

JOSH THAKE

In 2011, Josh auditioned and joined Les Ballets Trockadero de Monte Carlo. He has had the privilege of dancing on stages across Europe, North America, and Asia.

On November 22, 2020 he performed the role of Frantz, Act 3 *Coppélia*, on SBRI's newly created Secret Garden stage. In Spring 2021, he created and premiered his ballet *Rechauffé Brillante*, while also appearing in SBRI's Spring Expressions *Sleeping Beauty Act 3* and *A Midsummer Fairytale*. After returning as Frantz in SBRI's *Coppélia* during Season 62, he also premiered his new ballet *Western Hyperbole* during Spring Expressions 2022. During Season 64, he returns again as Frantz in *Coppélia* and will perform in *A Midsummer's Night Dream*.

Josh is thrilled to continue to share his passion for the arts with friends and family of SBRI and dance with his Alma Mater for another season.



SOLOIST DANCERS
OF THE STATE BALLET OF RHODE ISLAND



CHARLOTTE GONGOLESKI



SAMANTHA IRONS



TAEGAN MORAN

COMPANY DANCERS



Diana Bedford



Julia Brunelle



Sophia Burns



Rachel Curti



Molly Gilchrist



Julianne Gongoleski



Isabelle Mirzaei



Sarah O'Connell



Ellie Rawcliffe



Cassidy Weigand

APPRENTICE DANCERS



Cate Crane



Rose Imeson



Lila Lemoi



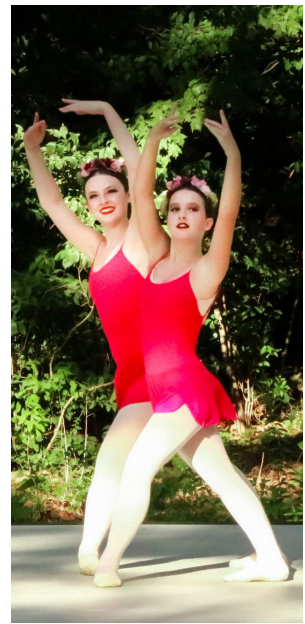
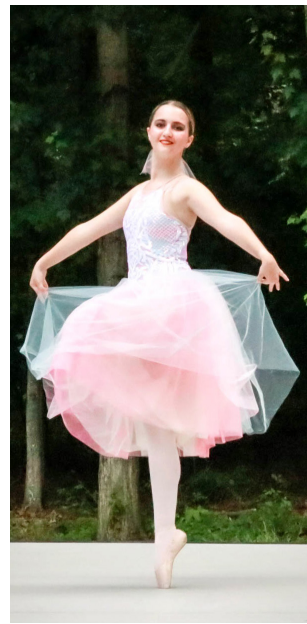
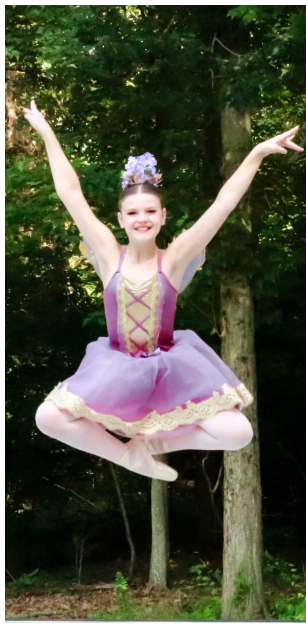
Ella Tran



Molly Weigand



Liza Weyer



Repertoire

1960 - Present

A Night in Vienna
 A Tale of Twelve Dancing Princesses
 Adagio
 A Degas Dancer
 Air
 Americana
 A Million Dreams
 A Midsummer Night's Dream
 A Midsummer's Fairytale
 Angel Standing By
 Alice's Adventures in Wonderland
 Apologize
 Aquarius
 Art and Motion
 Autumn Leaves
 Ballet Class
 Ballet Espagnol
 Ballet from Another Planet

Ballet Ireland
 Ballet of the Clowns
 Ballet West
 Beach
 Beethoven's Allegro I
 Beethoven Jam
 Be Still
 Better Place
 Beyond the Reach/Williams
 Bluebird/Pas de Deux
 Boys Will Be Boys
 Brave
 Bridge of Light
 Capriccio Italien
 Carmen
 Carmina Burana
 Carried Me With You
 Carry You
 Celebration Waltz
 Cherokee
 Chiaroscuro
 Chopin
 Cinderella

Circle of Life
 Claire de Lune
 Classical Concerto
 Columbine
 Comedians
 Company of Three
 Concerto
 Concerto - Beethoven
 Coppélia
 Dance of the Firefly
 Dance of the Hours / La Gioconda
 Danse Macabre
 Deco
 Destiny
 Divertimento 71
 Divertimento in D/Mozart
 Donizetti Pas de Deux
 Don Quixote Pas de Deux
 Don't Give Up on Me
 Dragon Fly/Pavlova
 Dueling Ballerinas
 Elvira
 Feel the Light
 Fight
 Forever Now
 Forever Young
 For Good

Found Tonight
 Gaité Parisienne
 Gansel and Hetal
 Garden Greeting
 Gayne Suite
 Giselle
 Glorious
 Glory
 Goddesses of the Vine
 Gracefully Gershwin
 Graduation Ball
 Gwendolyn the Graceful Pig
 Hamlet
 Hansel and Gretel
 Heghnar & Buck
 Hooked on Baroque
 Hungarian Dances
 I Lived
 I'll Keep You Safe
 Impressions of the Sky
 In My Life
 Interlooping
 Intermezzo
 I Remember Her
 I'm Standing With You
 Italian Symphony
 Jealous of the Angels
 Just Beyond My Reach
 Khachaturian
 Kismet



Kolo	Phantomgreen/Buechner	Stranac	The World is Ours
Land of the Sweets/ The Nutcracker	Petra and the Vuk	Strauss Variations	The Yard Went on Forever
La Esmeralda	Pictures at an Exhibition	Summertime	This Guy's in Love with You
L'Arlesienne Suite	Polovtsian Dances-Prince Igor	Summer - Vivaldi	This Is Me
La Bal	Power of the Dream	Summer of '42	To Where You Are
Lean on Me	Quiet City	Supermarket Flowers	Touch the Sky
Les Bras	Rachmaninoff Symphony No.2	Survivor	Train
Les Pied	Rama Lama Bang Bang	Swan Lake Divertissement	Two's Company
Let the Games Begin	Rechauffé Brilliante	Sylvia (The Nymph of Diana)	Tyrolian
Life Goes On	Reflections	Symphony in D-Minor	Tzigane/Ravel Valse Triste/ Sibelius
Lift Me Up	Rescue	Thaïs Meditation/Massenet	Unbreakable
Light Me Up	Rhapsodies Hungroise	Tarantella	Vienna Ball
Little Red Riding Hood	Rise	Tchaikovsky Violin Concerto/ in D, op. 35	Vienna Waltzes
MacArthur Park	Rise Up	Tears of an Angel	Vision of Love
Masquerade Ball	Ritual Fire Dance	The Can Can	Visiting Hours
Meditation	Romeo & Juliet	The Colors of Love & Light	Warrior
Moody Blues Impressions	Russian Folk	The Dream	Walpurgis Night/Bacchanal
Mozart's Divertimento in D	Ryan's Daughter	The Final Game	Waltz of the Flowers/ The Nutcracker
My Heart Will Go On	Safari	The Flame	Wanderlust
My Immortal	Samson & Delila Bacchanal	The Nymph & the Woodcutter	Weather in the Street
Night on Bald Mountain	Search/Chopin Piano Concerto	The Place Where Lost Things Go	Western
New Day's Lyric	Shostakovich Sonata	The Promise	Western Hyberole
New England Settlers	Slavic Melody	The Seasons	You're Gonna Be Okay
Okay	Slavonic Dances	The Sleeping Beauty	You are the Reason
Out of Ashes	Sleeping Beauty's Royal Wedding in the Woodes	The Syncopated Clock	Young at Heart
Pachelbel's Canon in D	Sound of Surviving	The Three Graces	Young Love
Part for Five	Spring Blossoms	The Web	
Part for Six	Stand in the Light		
Pas de Deux, Plus One	Stand By You		
Pas de Quatre			



THE STATE BALLET OF RHODE ISLAND'S

Board of Directors



Herci Marsden



Ana Marsden Fox



Shana Fox Marceau



Mark Marsden



Dr. Ajna Borogovac



Kari-Ann Rocco



Mia Nocera Godbout



Aimee Kenyon



Kimberly Najjar



Dujko Radovnikovic



Alissa Pascale



Pamela Viens



Sheila P. Burgess



Lori Broess



Katie Vincelette



Jacqueline Celeste



Andrea Gorman



Elizabeth D'Abbraccio



Julie Kooloian



Barbara Smith-White



Shalla Pacia



SBRI PUBLICITY TEAM
WEB DESIGN — Greg Gongoleski
GRAPHIC DESIGN — Sarah O'Connell



**TECHNICAL ADVISOR
& SET DESIGN**
John Boomer



**SBRI BUSINESS
ADVISOR**
Bryan Sawyer



**WARDROBE &
HEADPIECE CREATORS**
Sheila Burgess &
Beverly Najjar



*Assistant to Director and Principal Dancer
reading to students during Lincoln Central
Elementary's Reading Week, Grade 2*



*Project Ballet In Education
Outreach Program*



SBRI LEADERS OF EDUCATIONAL PROGRAMMING
Mia Godbout, Kari-Ann Rocco,
Barbara Smith-White

*Partner
with the
Arts
2023*



COPPELIA





ALICE'S ADVENTURES IN Wonderland





THE STATE BALLET OF RHODE ISLAND EXTENDS SINCERE APPRECIATION TO ITS MEMBERS...

PRESIDENT & CHAIRPERSON

Herci Marsden

EXECUTIVE DIRECTOR & TREASURER

Ana Marsden Fox

VICE CHAIRPERSON

Lori Broess

Mark Marsden

Shana Fox Marceau

BOARD OF DIRECTORS 2023-2024

SECRETARY

Alissa Pascale

RECORDING SECRETARY

Aimee Kenyon

HONORARY DIRECTORS

Alicia Grasfeder

Richard Anton Marsden

Bryan Sawyer

MEMBERS

Dr. Ajna Borogovac

Sheila P. Burgess

Jacqueline Celeste

Elizabeth D'Abbraccio

Mia Nocera Godbout

Andrea Gorman

Julie A. Kooloian

MEMBERS

Kimberly Najjar

Shalla Pacia

Dujko Radovnikovic

Kari-Ann Rocco

Barbara Smith-White

Pamela Viens

Katie Vincelette

ARTISTIC DIRECTOR'S CIRCLE

Dr. Ajna Borogovac
The Marsden Family
Ana Marsden Fox
Shana Fox Marceau
Dujko Radovnikovic

BCSB
HAProx
RISCA
Senate Legislative
Grant

PRINCIPAL DANCER'S CIRCLE

Asia Grille
Gloria Gemma Breast Cancer
Resource Foundation
Mr. Josh Thake

SOLOIST DANCER'S CIRCLE

Charles & Cecilia Chin
Cardi's Furniture & Mattresses
Mia Godbout
Kari-Ann Rocco
Sassafrass Hair Salon

CORPS DE BALLET CIRCLE

Bally's Twin River Casino
Cold Brook Cafe
Navigant Credit Union
Mr. & Mrs. Richard Grasfeder
Quality Rental

Chris Belisle
Norman Bell
John Boomer
Dr. & Mrs. Maarten Broess
Sheila Burgess
Mr. Gregory Fox

GOLDEN BENEFACTORS

Greg Gongoleski
Chelsea Jaensch
Professor William Kilroy
Shana Fox Marceau
Michael W. Marceau

Ms. Herci Marsden

Mr. Mark Marsden

Sarah O'Connell

The O'Donnell Family

Bryan Sawyer

Mr. & Mrs. Artin Taskin III

Josh Thake

SBRI SCHOLARSHIP FUND

Dennis Birchall
Herci Marsden
Embrace Home Loans Inc.
Frank O'Donnell
Keri Anne O'Donnell
Memorial Fund

GOLD PATRONS

Debra D'Alessandro
Smith Well, Inc
Maarten Broess
Barbara DeVivo Sr.

Eric Hovermale
Aimee & Jayson Kenyon
Mrs. Beverly Najjar
Network For Good

SILVER PATRONS

Amazon Smile
Elizabeth D'Abbraccio
Jacqueline Celeste

Ted Slincy
Robin L. Turner
United Way

BRONZE PATRONS

Carol Fusco
Joseph F. Penza Jr.
Julie Kooloian
Beverly Najjar
Notable Works

Angela & Peter Silvestre
Barbara Smith-White
Pam Viens
Nicole Villari

PATRONS

Casey D'Ambra
Jacqueline Celeste
Creating Healthier
Communities
Barbara DeVivo Sr.
Mr.&Mrs. Domenic Fiorio

Domenic & Sons Floor Covering
Eric Hovermale
Noreen Inglesi
Sally Garabedian
Bina Gehres
Michael Marceau

Paula Marandola
Julie Marcotte
Kristen O'Heir
Shalla Pacia
Papitto Opportunity Connection
Laurine Ryan Perry

RI Foundation Match
Arthur J. Sepe Jr.
Tracey Stanelun
Mr. David Stenmark
Katie Vincelette
Mr. & Mrs. Raymond White

CONTRIBUTORS

Elizabeth D'Abbraccio
James Belanger
Tarah Coppelino
The Crane Family
Marian & David Fattore
Maryann Fiorio
Brandan Fox
Dawn Marano
Elizabeth Marques
Ellen McBurney
Daniel & Jean Mullaney
Kristin Murray
Kimberly Najjar
Emily O'Heir
Bridget Olean
Laurine Ryan Perry

CONTRIBUTORS CONT.

Caroline Ricci
Bryan Sawyer
Christine Serapiglia
Jeff Sessions
Katharine Vincelette



*All 401 Gives
donations are
shown in
gold*

INDIVIDUAL & COUPLE

Anonymous Donor
Anonymous Donor
Jillian Belanger
Robert Block
Erika Brooks
Cara Burns
Rachel Clemence
Mandy Cole
Rebecca Coppelino
Erin Crane
Amy Daley
Emily Faulkenberry
Alex Gabriele
Nicole Ginzberg
Joann Gongoleski
Tami Hughes
Briana Hursten
Kendra Jenness
Alicia Johnson
Sheryl Irons
The Irons Family
Jennifer Lasiello
Lisa Lebrun
Rachel McNally
Timothy Mello
Christine Noel
Crystal Raviele
Erin Reed
Chelsea Smith
Laura Mills Webb
Grace Webb

THE STATE BALLET OF RHODE ISLAND EXTENDS SINCERE APPRECIATION TO ITS MEMBERS...

JUNIOR MEMBERS

Henry Fox
Hudson N. Fox
Anika Marceau
Noa Munitic
Veronika Munitic

Adela Radovnikovic
Ayden Radovnikovic
Armin Radovnikovic
Adam Radovnikovic
Ayla Radovnikovic

The Angelini Family
Cate Crane
Ralph & Sharon DeVivo Jr.
Sean Gilchrist
The Green Family
Emma Holman

Scott Langlands
Paula Marandola
Akiko Nishiyama
The Racine Family
Beverly Tinkham
Tiffany Tinkham

Christine Villecco
The Villecco Family
Kevin Yiu
The Zaks Famils
Guy & Adrienne Zampini
The Zampini Family

COPPELIA 2022 & ALICE 2023 CONTRIBUTORS

CORPORATE MEMBERS & BUSINESSES

Angelo's Palace Pizza
Arctic Playhouse
Asia Grille
Bally's Twin River Casino
Billy Manzo Pizza
Blackstone River Theatre
Brae Crest School of Ballet
Cardi's Furniture & Mattresses
Contemporary Theater
Cold Brook Café
CW Theatres/Lincoln Mall

Del's Lemonade & Refreshments, Inc
Domenic & Sons Floor Covering
Exceptional Wedding DJs
Fidelity Charitable
Formatt Printing Company
Gamm Theatre
G. Gemma Resource
Foundation
HAPROXY
Hercules Pizza Works
Historic Park Theatre & Events Ctr
Maarten Broess Orthodontics

Lanes & Games/Lincoln Mall
Navigant Credit Union
Network For Good
Nick Maresca PGA
Lincoln Country Club
Notable Works
One Rhode Consulting
Pauly Penta's Italian Deli
Pvd. Performing Arts Center
Providence Singers
Quality Rental
RI Commerce

RISCA
RI CHARG
RI Philharmonic
Sassafrass Hair Salon
Sea Smith Candle Co.
Short Sweet Cookie Company
Swarovski
Twin Oaks
Twin's Pizza
United Way of RI
The Woods Yoga
Wilbury Group



SBRI's 64TH PERFORMING SEASON IS SPONSORED IN PART BY:



SOUVENIR BOOK CREDITS

GRAPHIC DESIGN: Sarah O'Connell

ASSISTANTS: Ana Marsden Fox,
Shana Fox Marceau

COVER DESIGN: Sarah O'Connell

PRINTING: Formatt Printing, Inc.

PHOTOGRAPHY: Alan W. Bean,

Lori Broess, Eric Hovermale, S. Marceau,
Michelle Smith, Sarah O'Connell, S. Mallick,
Nick van der Wal, Donner Photographic,
Zoran Jelenic, & other photographers
from State Ballet's history

FOR MORE EVENT INFORMATION:

Telephone (401) 334-2560

Visit our website at www.stateballet.com,

Email: info@stateballet.com

BRACES FOR A GREAT SMILE
Maarten Broess DDS, DMSc, DMD, PC
bracesforagreatsmile.com
(401) 831-1414

**VOTED
TOP DENTIST
IN RHODE
ISLAND 2023**

OVER 10 YEARS IN A ROW!

Notable Works
Publication & Distribution
Co., Inc.

**Cold Brook
Café**
coffee - pastries - lunch

Open 7 days a week in
the beautiful village of
North Scituate, R.I.

138 Danielson Pike
North Scituate, RI
(401) 764-5334

facebook.com/coldbrookcafe

**Domenic
& Sons
FLOOR COVERING, INC.**

SALES & INSTALLATION
Carpet • Vinyl • Laminate
Ceramic • Hardwood

WINDOW TREATMENTS
All Work Guaranteed
Licensed & Bonded Lic.# 19007
Family Owned & Operated
30 Years Experience

Domenic Fiorio
President/Owner

255 Greenville Ave.
Johnston, RI 02919
domicandsons@hotmail.com
www.domicandsons.net

Cell: (401) 641-1439
Tel: (401) 231-1885
Fax: (401) 231-1887





**BALLY'S TWIN RIVER LINCOLN
CASINO RESORT IS PROUD TO
SUPPORT THE STATE BALLET
OF RHODE ISLAND**



Bally's

**TWIN RIVER
LINCOLN**

• FORMERLY TWIN RIVER •

Bally's Twin River Lincoln Casino Resort is located just 10 minutes from Providence and 45 minutes from Boston! Head to New England's friendliest casino for a better chance to win among friends.

**877-827-4837 | BALLYSLINCOLN.COM
100 TWIN RIVER RD. | LINCOLN, RI**



@ballystwinriver



Photo: CORE Photographic

*Concerts and one-night performances
to look forward to at PPAC!*

LINDSEY STIRLING: Snow Waltz Tour
Thursday, December 14 at 7:30P

**INDIGO GIRLS with The Rhode Island
Philharmonic Orchestra**
Saturday, March 23 at 7P

**HARRY POTTER AND
THE GOBLET OF FIRE with
The Rhode Island Philharmonic Orchestra**
Saturday, April 6 at 1P & 7P

SMOKEY ROBINSON
Saturday, April 13 at 8P

RAIN: A Tribute to The Beatles
Sunday, April 14 at 7P

DISNEY PRINCESS: The Concert
Thursday, April 18 at 7:30P

**An Intimate Evening with
DAVID FOSTER & KATHARINE MCPHEE**
Mother's Day - Sunday, May 12 at 7P

KANSAS
Friday, May 17 at 8P

*New shows are added all the time!
Visit ppacri.org for a current listing.*

Broadway's Best Live on Stage!

**Dr. Seuss' HOW THE
GRINCH STOLE CHRISTMAS!
THE MUSICAL²**
November 28 - December 3

Sponsored by: **NAVIGANT**
**BankNewport Family Night:
Wednesday, November 29 at 7P*

**MOULIN ROUGE!
THE MUSICAL¹**
December 19 - 31

**AIN'T TOO PROUD:
The Life and Times
of The Temptations²**
January 23 - 28

*Richard Thomas is Atticus Finch in
Harper Lee's
TO KILL A MOCKINGBIRD¹*
February 6 - 11

Disney's FROZEN¹
March 7 - 17
**BankNewport Family Night:
Wednesday, March 13 at 7P*

COMPANY¹
April 23 - 28

¹Part of The **ENCORE** / **ENCORE** The White Family Foundation Broadway Series

²Part of The **ENCORE** Series Encore Series Media Sponsor: **COX MEDIA**

Ask about **BANKNEWPORT Family Night buy one get one offer!*

Family Night Media Sponsors: **NOW 93.3** **6**



REGULAR BOX OFFICE HOURS:
*Monday - Friday: 10A - 5P; Saturday: 10A - 2P
And open two hours prior to curtain time(s) on show days.*

PPACRI.ORG • 401.421.ARTS (2787)

Congratulations to the State Ballet of Rhode Island as you celebrate Season 64! Best wishes to the entire cast, including Penelope and Gabriella Abiade!



One Rhode Consulting provides strategic consulting services to businesses, non-profits, and government entities as they develop or expand projects, programs, and special initiatives. We specialize in deploying mission-driven strategies, identifying funding resources, encouraging collaboration, and convening diverse voices to achieve the best possible outcomes.

Website: www.onerhode.com

Email: info@onerhode.com



Christine Noel
Artistic Director



53rd Season
2023-2024

Handel's **Messiah** December 10, 3 PM
The Vets
with the RI Philharmonic

Considering Matthew Shepard
by Craig Hella Johnson
March 9, 7 PM
WaterFire Arts Center

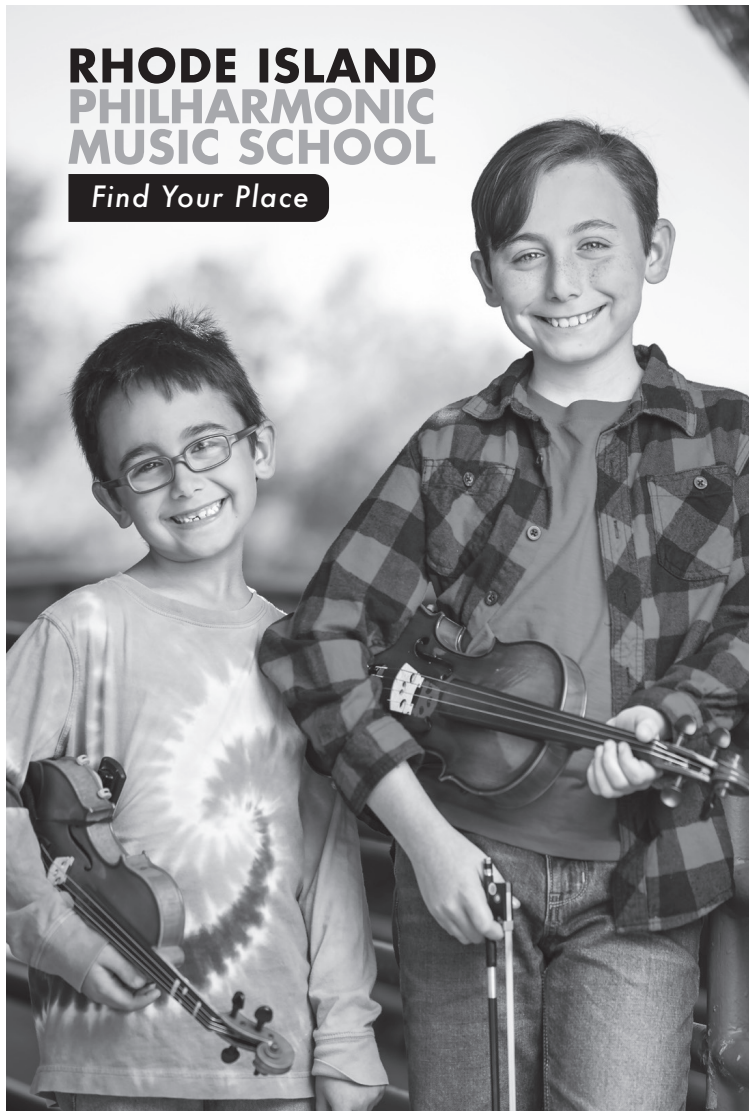
May 11, 7 PM
McVinney Auditorium
A Night at the Opera

Community Sing: Mozart's Requiem
May 14, 7 PM
Carter Center

www.ProvidenceSingers.org

RHODE ISLAND PHILHARMONIC MUSIC SCHOOL

Find Your Place



As the largest combined non-profit music school and professional orchestra in the United States, our students receive a unique, well-rounded and inspirational experience. Select from the widest range of music education programs and performance opportunities in Rhode Island. Experience the benefits of learning music beyond just playing, including positive academic, social and emotional outcomes. Choose from private lessons, fun classes, comprehensive workshops and exciting ensembles representing different musical styles.

Lessons for Everyone - Any Age, Any Type of Music!

LESSONS START AT \$42

FINANCIAL AID & PAYMENT PLANS AVAILABLE

- Violin, Viola, Cello, Flute, Trumpet & more!
- Suzuki Instruction
- Music Therapy

Ensembles you'll love

- Youth Orchestras • Chamber Music • Jazz & Rock
- Flute Choir • Horn Ensemble • Wind & Brass Choir

Group classes for all ages

With convenient and fun classes available for all ages, the Rhode Island Philharmonic Music School has something for everyone!

Get Started TODAY!

MS.RIPHIL.ORG/SBRI • 401.248.7001



RHODE ISLAND PHILHARMONIC ORCHESTRA

2023/2024 SEASON

Subscribe Today!

TICKETS.RIPHIL.ORG/SUBSCRIPTIONS
401.248.7000

TACO CLASSICAL SATURDAYS

Tickets start at \$20

Enjoy elegant musical Saturday evenings at The VETS.

AMICA RUSH HOUR FRIDAYS

Tickets start at \$20

Early start time, shorter concert, relaxed atmosphere. Perfect for families!

2023 - 2024 SEASON

Highlights include works of Beethoven, Shostakovich, Mahler, Debussy, and more!



Rhode Island's Premier Tent, Wedding, and Party Rentals

qualityrental.com | (401)-725-0928



PROUD TO SUPPORT

The State Ballet of Rhode Island




Navigant
CREDIT UNION®

Federally insured by NCUA

CONGRATULATIONS HERCI MARSDEN &
THE STATE BALLET OF RHODE ISLAND
ON YOUR 64TH PERFORMING SEASON!



asia/grille

FRESH AUTHENTIC CHINESE CUISINE

Open Daily 11 AM | 401 - 334 - 3200

622 GEORGE WASHINGTON HIGHWAY
LINCOLN MALL, LINCOLN, RI

NOW AVAILABLE ON GRUBHUB

www.asiagrille.com